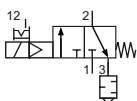


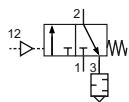
Technical details

| | |
|--------------------------|---|
| Temperature range | -10°C ... +60°C |
| Input range | electrically operated: 2 ... 10 bar pneumatically operated: max. 16 bar |
| Mounting | arbitrary |
| Medium | compressed air according to ISO 8573-1:2010, neutral gases |
| Materials | Body: zinc diecasting, seals: NBR, inner parts: zinc coated steel, stainless steel and brass |
| Schutzart | IP 65 according to EN 60529 |

3/2-way poppet valve, electrically or pneumatically operated.
 Silencer is mounted in exhaust.
 Plug socket is included.



electrically operated
 3/2-way, single solenoid, mechanical
 spring return, NC



pneumatically operated
 3/2-way, single pilot, mechanical
 spring return, NC



Order code

| VMK-**-00-0-000* | |
|------------------|--------------------------|
| Series | Versions |
| Connection | Digit 4 Version |
| 14 G1/4 | A 24 V DC, 3 W |
| | D 115 V AC, 7.9 VA |
| | E 230 V AC, 7.9 VA |
| | F pneumatically operated |

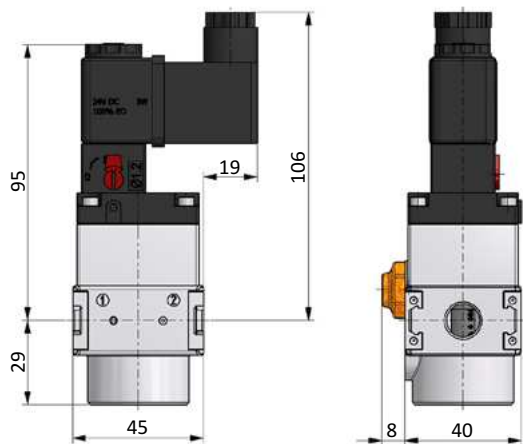
Technical data

| | |
|---------------------------------|------------|
| Model-no.: | VMK-14-... |
| Connection | G1/4 |
| Flow (1-2 in l/min) | 1600 |
| Weight(Version A-E) (kg) | 0.46 |
| Weight(Version F) (kg) | 0.54 |

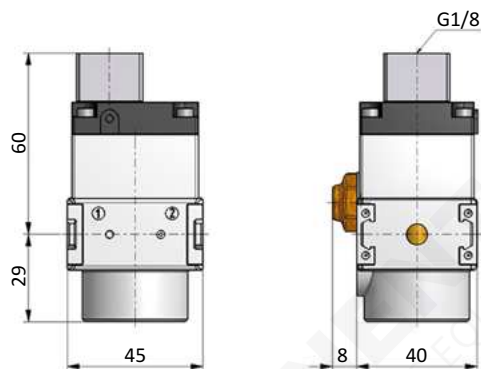
3/2-way inline valve VMK

Dimensions

electrically operated



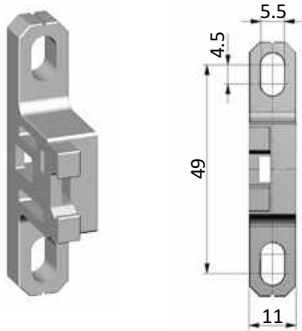
pneumatically operated



Mounting bracket WK-00

Mounting bracket (set of two pieces) made of PA 66. Mounting only sidewise possible.

WK-00



Coupling kit KPK

KPK-00

