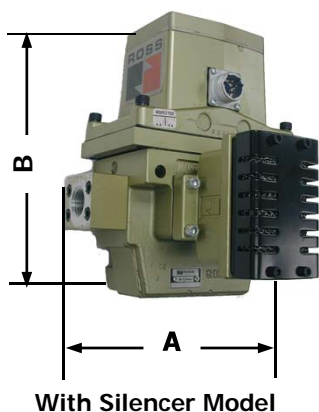




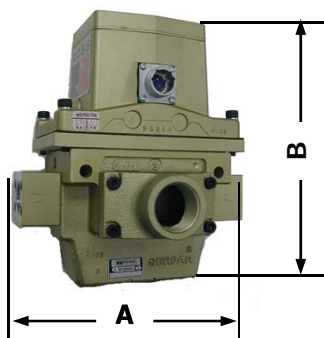
SERPAR® Crossflow Press Control Double Valves

Size 4

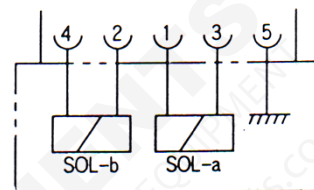
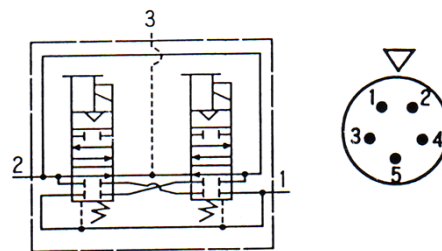


With Silencer Model

C = Thickness



Without Silencer Model



Wiring Diagram

STANDARD SPECIFICATIONS

Pilot Solenoid : Two, rated for continuous duty.
Standard voltages : 100-110 volts 50 Hz, 100-120 volts, 24, 110 volts DC. Other voltages available.
Power Consumption : Each solenoid, 87 VA inrush, 30 VA holding on 50 or 60 Hz ; 14 watts on DC
Electrical Connections : Multipin Connector.
Ambient Temperature : 4 to 50 °C (40 to 120 °F)
Media Temperature : 4 to 80 °C (40 to 175 °F)
Flow Media : Filtered air.
Pressure Range : 2 to 8.5 bar (30 to 125 psi)
Ports : NPT threads.

VALVE OPERATION

Both solenoids must be energized simultaneously to shift the valve; maintained signal required to keep valve shifted.

Valve Response Time (msec) = M + F * V
 average time required to fill volume V (cubic inches) to 90 percent of supply pressure or to exhaust it to 10 percent of supply pressure. M and F values are shown in chart below. See Valve Response Time on page 18. Ratings also on page 18.

VALVE MODEL NUMBER (WITH SILENCER)									
PORT SIZE	MODEL NUMBER (WITH SILENCER)		AVERAGE CV.		WEIGHT	DIMENSION			
			1 TO 2	2 TO 3		Kg	A	B	C
3/8"	J3573B3258		3.0	6.0	3.8	183	205	160	
1/2"	J3573B4258								
3/4"	J3573B5258		3.0	9.0	3.8	183	205	160	
1"	J3573A6709		3.0	9.0	3.8	218	205	160	
VALVE MODEL NUMBER (WITHOUT SILENCER)									
PORT SIZE	EXH. PORT	MODEL NUMBER (WITH SILENCER)		AVERAGE CV.		WEIGHT	DIMENSION		
				1 TO 2	2 TO 3		Kg	A	B
3/8"	1"	J3573B3257		3.0	6.0	3.5	183	205	117
1/2"	1"	J3573B4257							
3/4"	1"	J3573B5257		3.0	9.0	3.5	183	205	117
1"	1"	J3573A6711		3.0	9.0	3.5	218	205	117

