

SENTRY Modular Integral Filter/Regulators



CFDR10M, CFDR11M Models Port Sizes: 1/8, 1/4 Tube Fittings

- ◆ Filter and regulator consolidated in a single assembly.
- ◆ Modular assembly and mounting.
- ◆ Threaded ports or quick-connect fittings for tubing up to 10 mm in diameter.
- ◆ 5- μ m-rated polyethylene filter element; optional sintered bronze elements.
- ◆ High-strength polycarbonate plastic filter bowl; optional metal bowl.
- ◆ Internal automatic drain; optional manual drain.
- ◆ Piston-type regulator (CFDR10M models) or diaphragm-type (CFDR11M models).
- ◆ Self-relieving regulator; non-relieving optional.
- ◆ Pressure gauge.
- ◆ NPTF port threads; optional BSPP threads.

SPECIFICATIONS

Ambient/Media Temperature:

40° to 125°F (4° to 52°C).

Body: Acetal.

Bowl: 2-Ounce (60-ml) capacity polycarbonate plastic; optional aluminum bowl.

Dome and Knob: Acetal.

Filter Drain:

Internal automatic drain; optional manual drain.

Filter Element: 5- μ m-rated polyethylene; optional 5- μ m, 20- μ m, or 40- μ m sintered bronze.

Fluid Media: Compressed air.

Inlet Pressure:

15 psig (1 bar) minimum with automatic drain.
150 psig (10 bar) maximum.

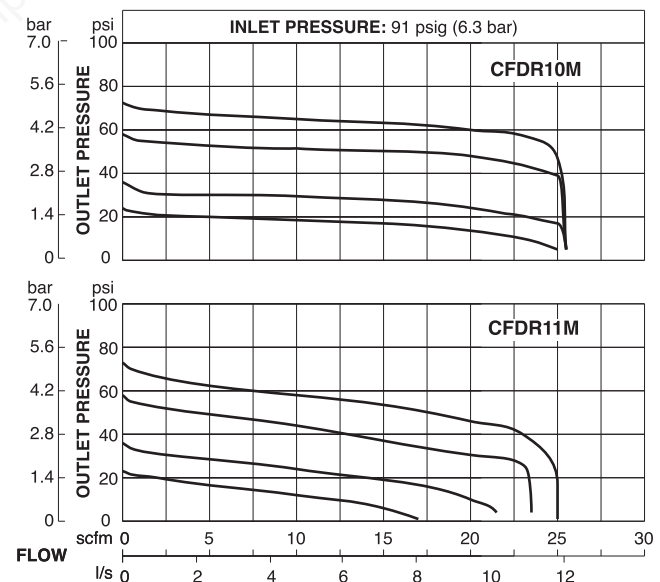
Outlet Pressure: Adjustable up to 100 psig (7 bar).

Pressure Gauge: 0 to 160 psig (11 bar); 1/8 NPT gauge ports front and rear.

Panel Mounting: 1-3/16 inch (30 mm) hole required.

Seals: Nitrile.

FLOW CHARTS



บริษัท แฟคโต คอมโพเนนส์ จำกัด | FACTO COMPONENTS CO., LTD.

845/3-4 ชั้น 3 ถ.เทพารักษ์ ต.เทพารักษ์ อ.เมือง จ.สมุทรปราการ 10270

TEL. 02-384-6060, 086-369-5871 | LINE OA: @134ovdbx | Website : www.factocomponents.co.th | Email : info@factocomponents.co.th

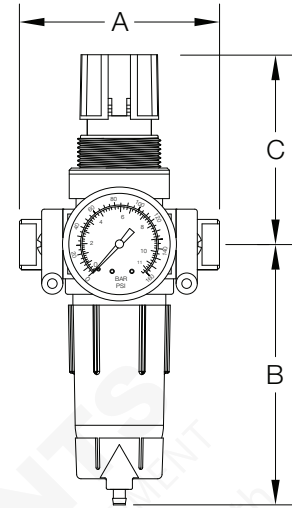


DIMENSIONS inches (mm)

Ports	A	B *	C	Depth †	Weight † lb (kg)
No Port	1.7 (43)	3.9 (99)	2.6 (67)	1.8 (45)	0.31 (0.15)
1/8, 1/4	3.0 (76)	3.9 (99)	2.6 (67)	1.8 (45)	0.53 (0.24)
Models below have quick-connect fittings for tubing.					
1/4	3.4 (86)	3.9 (99)	2.6 (67)	1.8 (45)	0.51 (0.23)
3/8	3.9 (99)	3.9 (99)	2.6 (67)	1.8 (45)	0.51 (0.23)
4 mm	3.4 (86)	3.9 (99)	2.6 (67)	1.8 (45)	0.51 (0.23)
6 mm	3.4 (86)	3.9 (99)	2.6 (67)	1.8 (45)	0.51 (0.23)
8 mm	3.4 (86)	3.9 (99)	2.6 (67)	1.8 (45)	0.51 (0.23)
10 mm	3.9 (99)	3.9 (99)	2.6 (67)	1.8 (45)	0.51 (0.23)

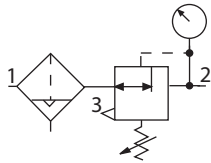
* Dimension with plastic filter bowl; with metal bowl is 4.3 (109).

† Less gauge.



ISO Filter/Regulator Symbol

**Automatic Drain
Self-relieving**



REPLACEMENT FILTER ELEMENT KITS

Element Type	Kit Number
5-µm polyethylene (Std element).....	KA130-27PE5
5-µm bronze	KA130-27E5
20-µm bronze	KA130-27E4
40-µm bronze	KA130-27E3

ORDERING INFORMATION

Change the letters in the sample model number below to specify the filter/regulator you want.

B C FD R10M P - 2 X Y P W

BOWL TYPE

Plastic bowl Leave Blank
Metal bowl B

FILTER DRAIN

Internal automatic drain FD
Manual drain F

REGULATOR TYPE

Piston type R10M
Diaphragm type R11M

MOUNTING HOLE LOCATION

Bottom mount (Standard) Leave Blank
Top mount P

INLET PORT SIZE

No Inlet and Outlet Ports Leave blank

Threaded:

1/8 NPTF 1
1/4 NPTF 2

Fittings for Tubing:

1/4 04
3/8 06
4 mm M4
6 mm M6
8 mm M8
10 mm M10

OUTLET PORT SIZE

Same as inlet port Leave Blank

Threaded:

1/8 NPTF -1
1/4 NPTF -2

Fittings for Tubing:

1/4 -04
3/8 -06
4 mm -M4
6 mm -M6
8 mm -M8
10 mm -M10

PORT TYPE

As specified in **INLET PORT**... Leave Blank
BSPP threads on both ports W

OPTIONS (More than one option can be chosen. Add in alphabetical order)

0-160 psig Gauge Leave Blank
No psig Gauge NG
Plastic nut P
Metal nut PN
Hex plastic mounting nut PE

OPTIONS (More than one option can be chosen. Add in alphabetical order)

None Leave Blank
Non-relieving A
Sintered bronze filter element:
5-µm rating E5
20-µm rating E4
40-µm rating E3
Adjusting springs:
0-125 psig (0-8.6 bar) H
0-50 psig (0-3.4 bar) L
0-8 psig (0-0.6 bar) L8
0-15 psig (0-1.0 bar) L15
0-30 psig (0-2.1 bar) L30
No Drain (*lubricator bowl*) LDC
(Use *Manual Drain* Option under **BOWL DRAIN** section as well)
Tamper-resistant spinning MV(*)
knob (psig preset)
Viton seals V

*Insert maximum limited pressure.

MOUNTING BRACKETS

See page 346.