

Digital pressure guage Y290 series Datasheet



FACTO COMPONENTS CO., LTD. | บริษัท แฟ็คโต คอมโพเนนส์ จำกัด

845/3-4 ชั้น 3 ถ.เทพารักษ์ ต.เทพารักษ์ อ.เมือง จ.สมุทรปราการ 10270

TEL. 02-384-6060, 086-369-5872 LINE OA : @factocomps Website : www.factocomponents.co.th Email : info@factocomponents.co.th

Digital pressure gauge Y290



This is a high-precision intelligent digital pressure gauge, there is high-precision pressure sensor built-in , it can display real-time pressure accurately , and has high precision and good long-term stability.

The digital pressure gauge is equipped with large-size LCD liquid crystal display, with clear, backlight, switch machine, unit switching, low voltage alarm and other functions, it's easy to operate and install.

The products using 304 stainless steel shell and joints and has a good shock resistance, it can measure the gas, liquid, oil and other non-corrosive stainless steel medium.

The intelligent digital pressure gauge apply to portable pressure measurement, match with equipment, calibration equipment and other pressure measurement areas.

Applications

- Oil,
- Chemical,
- Chemical fiber,
- Metallurgy,
- Power station

Features

- High-quality stainless steel shell and Interface are shock-resistant and durable.
- A variety of measurement units, one key toggle.
- With temperature compensation, small temperature coefficient, and accurate measurement.
- Maximum 1.1 times of range overload display, and it has a peak record function.
- Four-digit half-segment display, accurate and intuitive.
- The battery power is graphically displayed, and the pressure value percentage meter bar graph display.
- Backlight for easy viewing at night.



Y290

Digital pressure gauge Y290

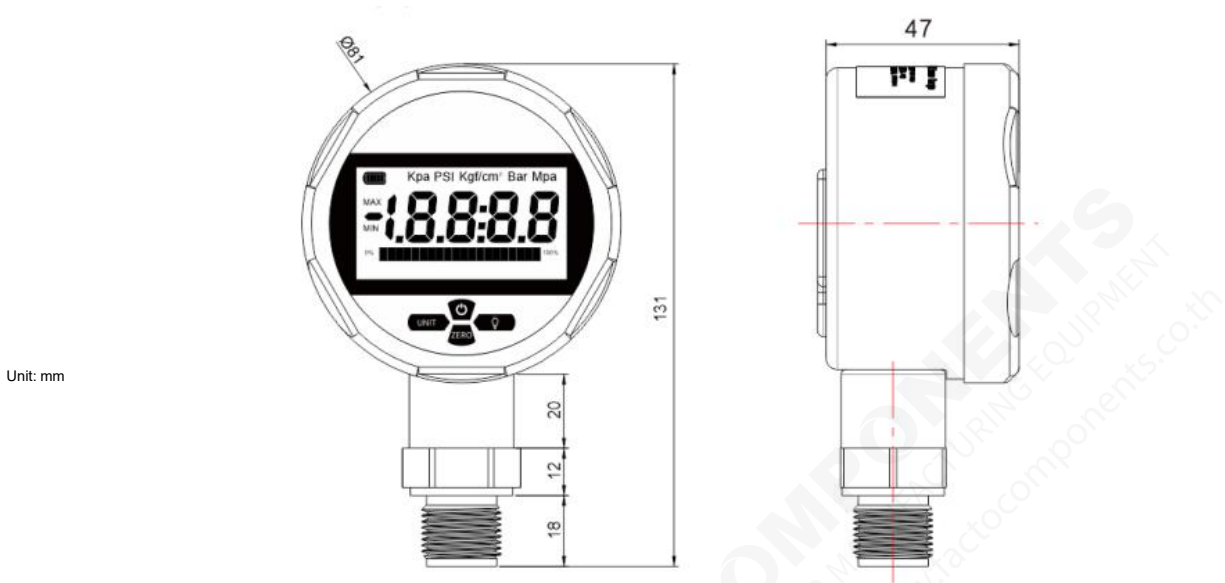


Parameters	
Range	-0.1~0~60MPa
Pressure type	Gauge pressure, Absolute pressure, Negative gauge pressure
Overload capacity	<40MPa 150% >=40MPa 120%
Accuracy	±0.5%
Long-term stability	0.2%FS/Y
Dimension	Φ81mm* H131mm* W47mm
Weight	440g
Power supply	3V (2 AAA batteries)
Battery Life	≥6months (According to the specific condition of use)
Sampling frequency	3times/second
Backlight color	White
Measuring medium	Air, water, oil and other non-corrosive media on stainless steel
Peak record	Yes
Case material	304 stainless steel
Interface material	304 stainless steel

Digital pressure gauge Y290



Dimension



Unit: mm

- The pressure gauge supports vertical installation or horizontal installation.
- The pressure can not exceed the range while using.
- When there is no pressure but the pressure value is displayed, please press the "Zero" key to calibrate zero error
- Before installing the product, check whether the pressure gauge is clean, and keep the pipeline clean during use.

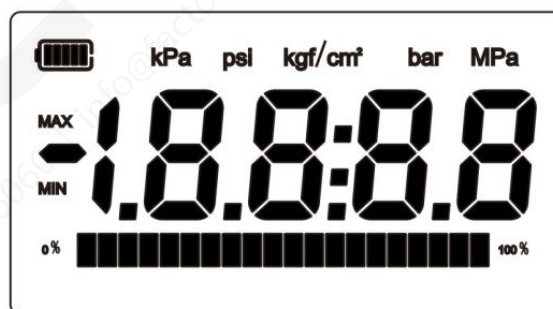
Digital pressure gauge Y290



Display



	On/off
	Press to switch unit
	Press and hold for 3 seconds to calibrate the zero point error
	Press to turn on/off the backlight, hold the press to keep the backlight on



Symbol	Meaning
kPa、psi、kgf/cm2、bar、MPa	Pressure unit
MAX	Maximum pressure
MIN	Minimum pressure
	Battery power

Digital pressure gauge Y290



Ordering code

Y290-A-1A-3-L2-A-F-WN-PA											Description	
Y290	-	-	-	-	-	-	-	-	-	-	-	Gauge Pressure, Radial
Pressure Type and Dial Orientation	A											Adiabatic, Radial(0-30kPa...1MPa)
	C											
Measurement Range	1A											-100-0kPa
	1B											-100-100kPa
	1C											-100-1000kPa
	1M											0-20kPa
	1Q											0-50kPa
	1S											0-100kPa
	2A											0-0.6MPa
	2B											0-1MPa
	2C											0-1.6MPa
	2D											0-2.5MPa
	2E											0-4MPa
	2H											0-10MPa
	2K											0-20MPa
	2L											0-25MPa
	2M											0-30MPa
2N											0-40MPa	
2P											0-60MPa	
XX												Other
Accuracy and Disk Diameter											7	0.5 class, Φ 80mm
											3	0.25 class, Φ 80mm
Thread Type											L2	M20 \times 1.5
											G1	G1/4
											G2	G1/2

Digital pressure gauge Y290



	L1				M14 × 1.5
	X				Other
Diaphragm and Thread Type Material	A				316LSS,304SS
	B				316LSS,316SS
	X				Other
Power Supply		F			7# Battery
Electrical Interface, Housing Material, and Ingress Protection			WN		DIN Connector,304SS,IP65
Additional Features (Optional)					
Accessories			PA		Threaded base carbon steel CS
			PB		Threaded base 304SS
			PD		Threaded base 304SS