

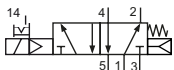
Technical details

Connection	G1/2
Temperature range	-10°C ... +70°C
Medium	Filtered, oil-free and dried compressed air according to ISO 8573-1:2010, Class 7:2:4, instrument air, free of aggressive additives. Alternatively the pressure dew point must be at least 10°C below lowest occurring ambient temperature.
Materials	Body: Al (anodized), plastic, seals: NBR, inner parts: Al, steel and plastic
Protection	IP 65 according to EN 60529

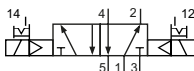


Electrically operated spool valve. The manual override is detent/ non-detent. It is operated manually or by screwdriver.

5/2-way valves



86-MV-5-12-511-xxx
 5/2-way, single solenoid, mechanical spring return and air spring return

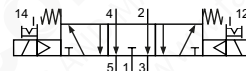


86-MV-5-12-520-xxx
 5/2-way, double solenoid

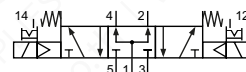
5/3-way valves



86-MV-5-12-530-xxx
 5/3-way, center position closed



86-MV-5-12-533-xxx
 5/3-way, center position exhausted



86-MV-5-12-534-xxx
 5/3-way, center position pressurized

Please complete: xxx = electrical option

Electrical options

Nominal voltage	Power consumption	Specifics	Plug connection*1	-XXX Manual override on same side of ports 2 and 4
24 V DC	3 W		Form B industrial norm	-M42
220 V AC	3.5 VA		Form B industrial norm	-M57

*1 Plug socket with integrated LED are part of delivery

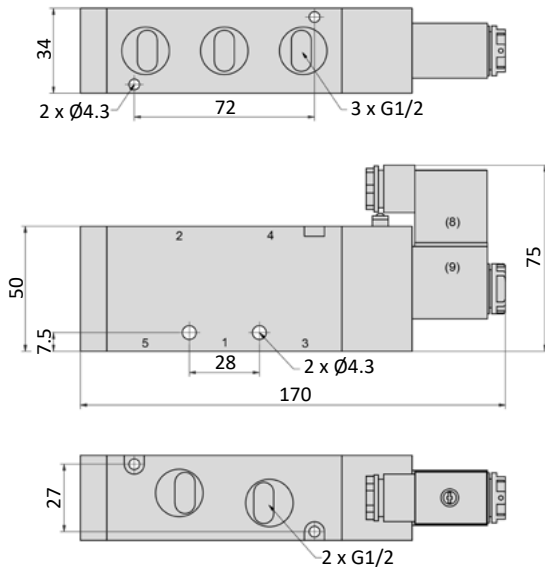
Technical data

Model-no.:	86-MV-5-12-511	86-MV-5-12-520	86-MV-5-12-530	86-MV-5-12-533	86-MV-5-12-534
Operating pressure (bar)	1.5...8	1.5...8	1.5...8	1.5...8	1.5...8
Nominal size (mm)	8	8	6.5	6.5	6.5
Flow rate (NI/min)	2500	2500	1600	1600	1600
Response time (ms) at 6 bar	20	20	20	20	20
Weight (kg)	0.506	0.626	0.714	0.714	0.714

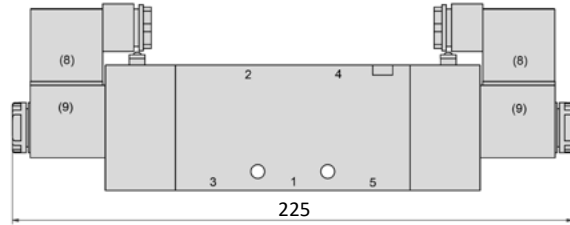


Dimensions

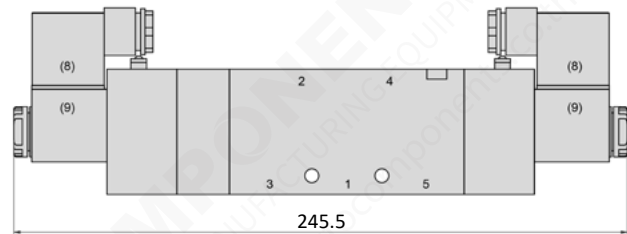
86-MV-5-12-511



86-MV-5-12-520



86-MV-5-12-53x



- 1 = pressure inlet
- 2,4 = outlets
- 3,5 = exhausts

Plug socket can be repositioned by 180°.
Solenoid coil can be repositioned by 4 x 90°.