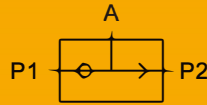


## QS Shuttle Valve



### Specifications

Model (mm)	QS-06	QS-08
Working medium	Clean air(After 40 μ m filtration )	
Working Pressure (psi)	0.15~0.8	
Guaranteed pressure (psi)	1.2	
Working temperature(F)	-20~70	
Port size ①	1/8"	1/4"
Standard rated flow	P1: 700	P2: 2300
The amount ( L/min )	P1: 500	P2: 1700
Weight(g)	45	85

① G、PT、 NPT thread type is optional.

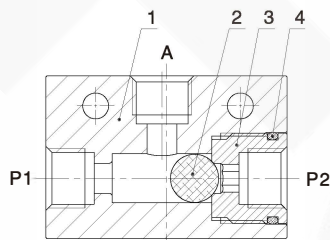
### How to Order?

Series No.	Port Size	Thread Type
QS:Shuttle valve	06:1/8" 08:1/4"	Blank: G P : PT T : NPT

#### Order Example:

QS series shuttle valve, port size: 1/4", G thread, the ERP code is: QS-08

### Internal Structure

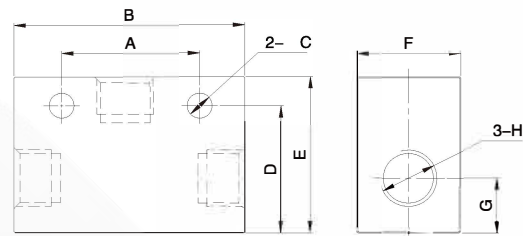


No.	Name
1	Valve body
2	Rubber ball
3	End cover
4	O-ring

### Product Features

- \* Normally working with main valve together, not be used separately.
- \* Valve provides better assistance for completed control pneumatic system.

### Main Dimension



Model	A	B	C	D	E	F	G	H
QS-06	24	40	4.3	22	27	18	10	1/8"
QS-08	35	50	6.5	27.5	35	22	13	1/4"